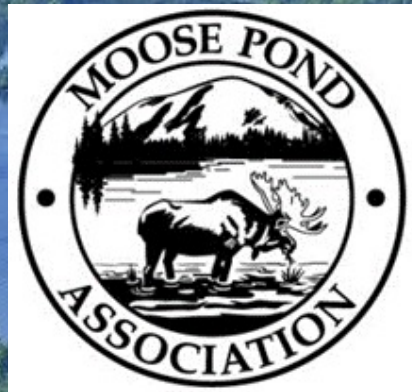


Moose Pond Association Annual Meeting

August 21, 2021



Agenda

- Welcome and Agenda Overview
- Report on Lake Health
 - Water Quality Monitoring
 - Invasive Plant Survey
 - Lake Photo Inventory
 - Loon Project
- CBI Activities and Boat Wash Stations
- Membership Health and Communication
- Financial Health
- LakeSmart Program Reminder
- Wake Wise Reminder and Request
- Board Nominations and Elections
- Question and Answer Session

Mark Patterson
LEA's Ben Peierls

Bill Muir
Laurie Vance
Laurie Vance
Chip Wendler
Chip Wendler
Mark Patterson
Mark Patterson



Board Nominations and Elections

<u>Board Member</u>	<u>Remaining Term (Years)</u>	<u>Expiration Year</u>
• Zach Clayton	2	2023
• Bill Dexter	1	2022
• Bill Dromerhauser	1	2022
• Paul Dwyer	1	2022
• Scott Frame	2	2023
• Bill Muir	1	2022
• Anne Munstedt (Clerk)	2	2023
• Mark Patterson (President)	3	2024
• Gordon Pulsifer	Retiring	2021
• Stephanie Scarce	3	2024
• Laurie Vance (Treasurer)	Renewed	2021
• Chip Wendler (Vice President)	3	2024



Thank You for Your Support!

BRIDGTON NEWS
towns of Western Maine since 1870.

Sports 7A
Student News 5A-6A
Games 7B
Legal Notices 4B

www.bridgton.com

Maine July 2, 2020 (USPS 065-020) 95¢

Milfoil surfaces at 'head' of Long Lake

By Colin Holme
Special to the News

On Friday, June 12, one of our courtesy boat inspectors pulled a plant off a trailer coming out of the water at the Long Lake boat launch in Harrison. It is not unusual to find plants on boats and trailers, but our inspector, Gilon Backlund, noticed it looked suspicious so he bagged it up and brought it to Mary Jewett at Lake Environmental Association's Main Street office.

Red flags went up as Mary examined the specimen. It appeared to be invasive variable leaf milfoil. Even more alarming was the fact that the boat had not been in any other waterbodies this year and the north basin of Long Lake had no known infestations of this invader. After a couple years of extensive control work on infestations in Mast Cove and Salmon Point campground, both miles away, these existing problem sites are mostly under control and unlikely to be a source of new plant fragments.

Mary raised her concerns in-house at LEA, sent the plant fragment off to be positively identified by DNA and we sent out our milfoil dive team to survey the north cove of the lake. Unfortunately, what they found was not good.

A house-sized swath of milfoil and several other smaller patches lurked in the shallow waters just south of Harrison Marina and in an area with heavy boat traffic all summer long.

After finding the patches, longtime crew-member and dive captain, Lucien Sulloway, was positive the patch was invasive variable leaf and eager to begin control efforts. However, we still had not gotten the DNA results back and I was hesitant to commit time, manpower, and funds to the new site. There are two native milfoils that can look alarmingly similar to variable leaf milfoil. But Lucien, who is familiar with the native varieties, was positive it was the invader.

With boat traffic increasing every day and the Fourth of July around the corner, we made the decision to cover the patches with benthic barriers that would smother the plants and keep their tendrils away from the props of boaters above.

Given the green light to move forward, Lucien and his team deployed four 20'x30' barriers over the patches in the middle of last week. On Friday, we received word back from Saint Joseph's professor, Lucas Bernacki, that the plant fragment we sent in was invasive

MILFOIL, Page 3A



We Want to Avoid This Scenario!



Commercial harvesters are expensive: capital outlays can range from \$30,000-100,000. Annual costs per hectare can range from \$350 to \$4000 for regular control and contractors may charge from \$300 to \$600 per acre per cut. Harvesting generally needs to be repeated each year and often more than once annually. -- University of Minnesota



Lake Health: Water Quality Monitoring

- 2021 data through July
- Close to long-term average conditions
- No concerning long-term trends through 2020

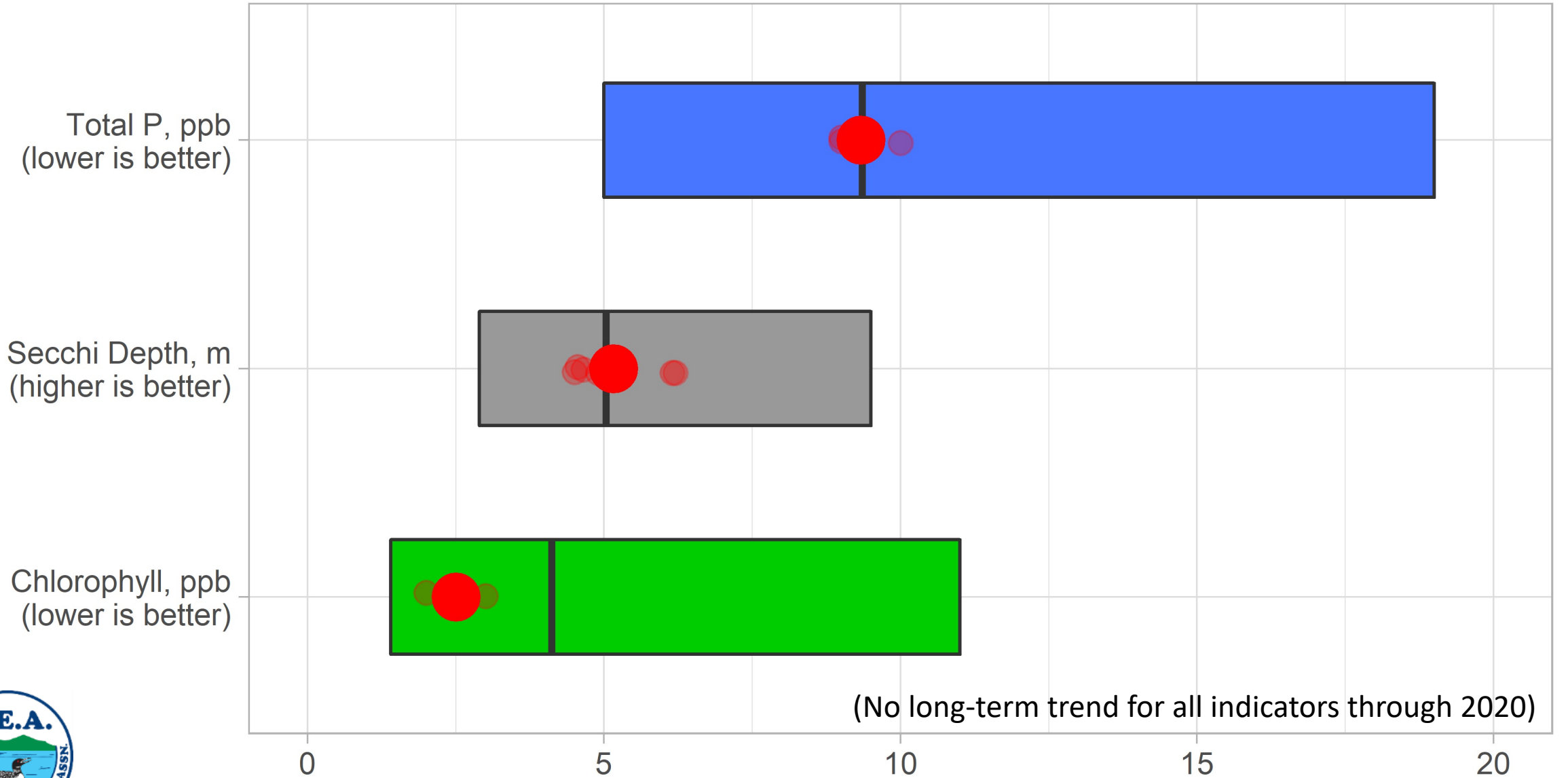


Moose Pond-North

Preliminary data through July 2021

● Mean and raw 2021 data

▭ Min, mean, and max long-term data



(No long-term trend for all indicators through 2020)



Moose Pond-Main

Preliminary data through July 2021

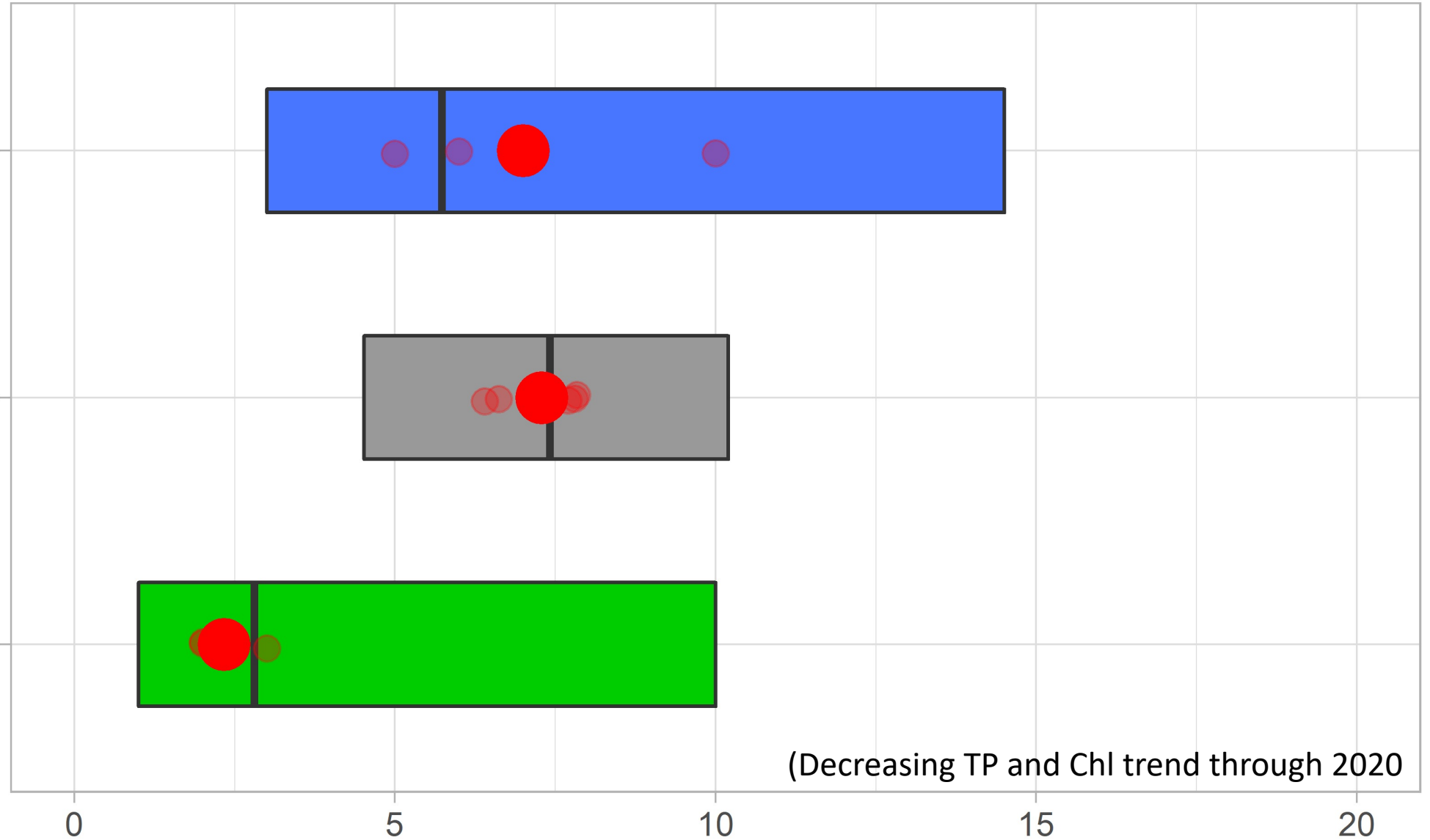
● Mean and raw 2021 data

▭ Min, mean, and max long-term data

Total P, ppb
(lower is better)

Secchi Depth, m
(higher is better)

Chlorophyll, ppb
(lower is better)



(Decreasing TP and Chl trend through 2020)

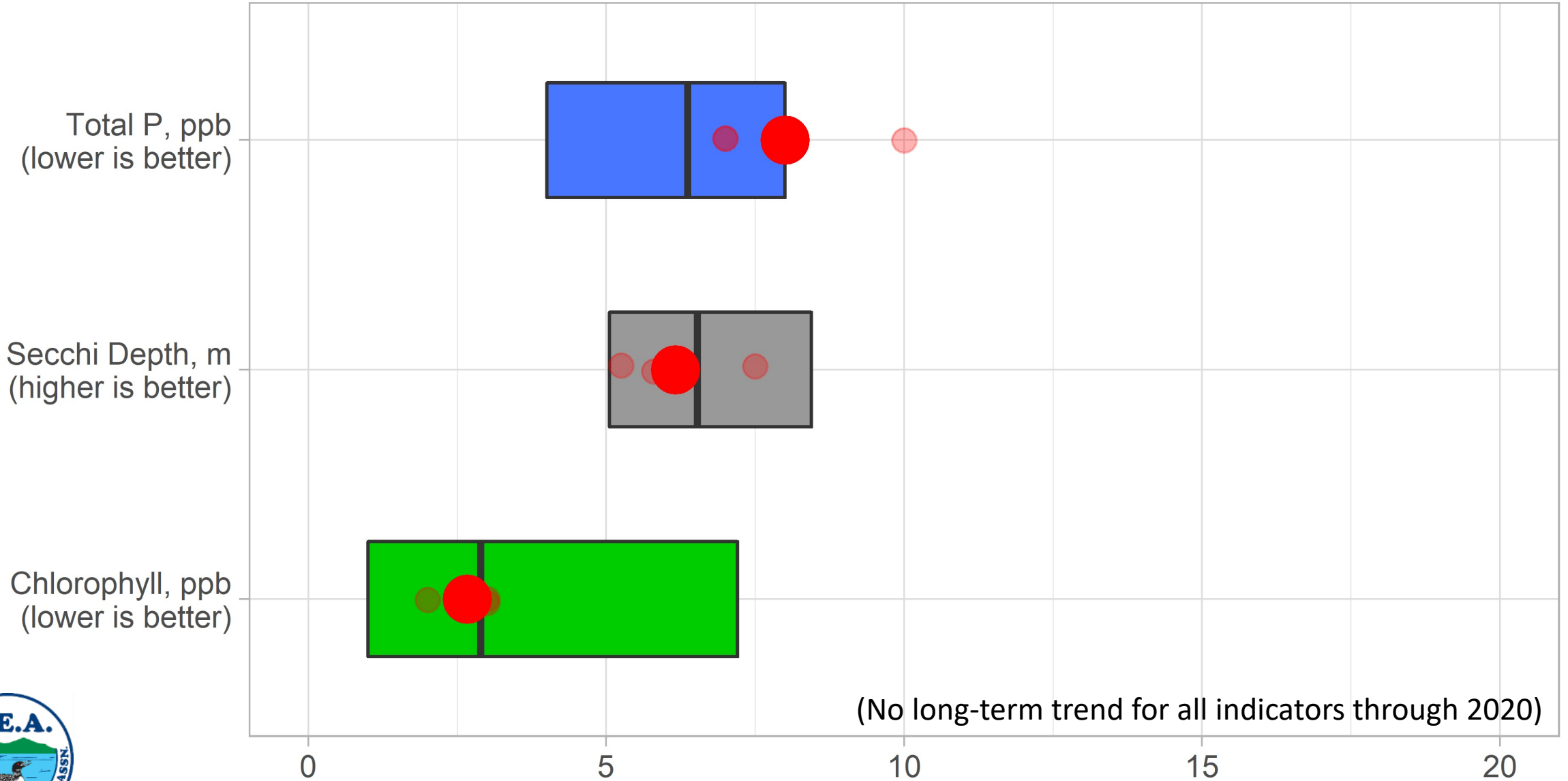


Moose Pond-South

Preliminary data through July 2021

● Mean and raw 2021 data

▭ Min, mean, and max long-term data

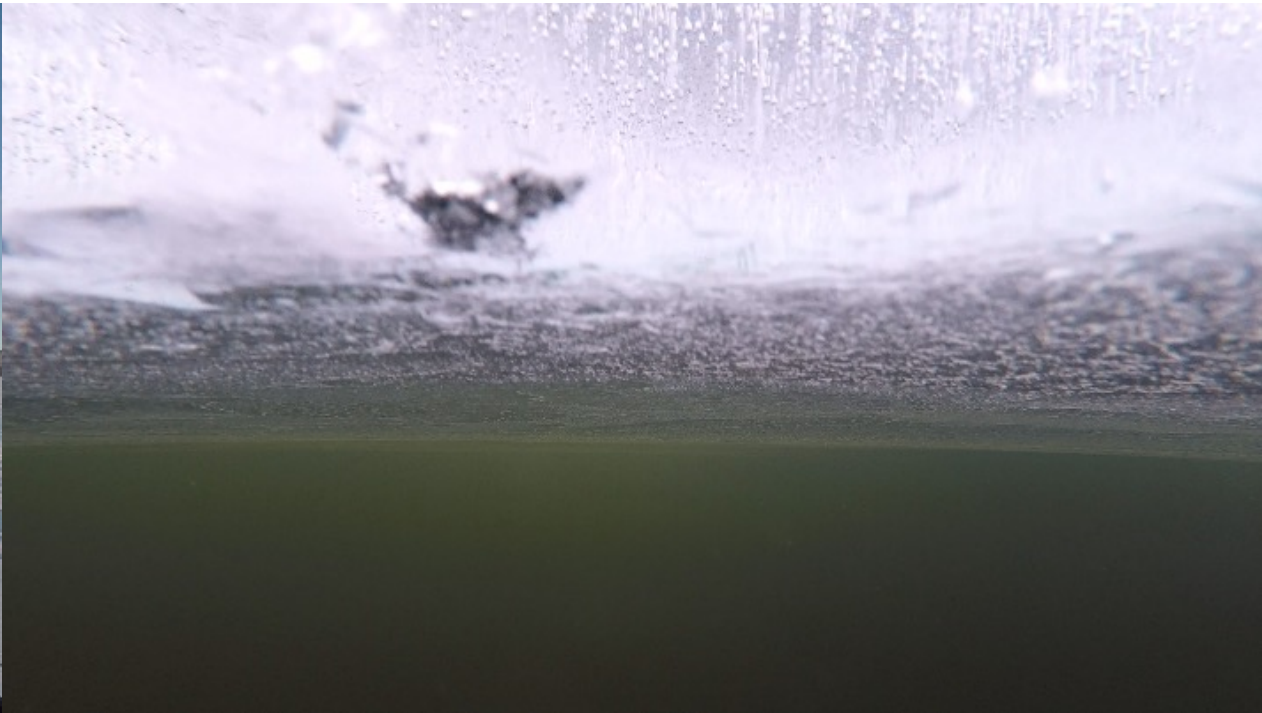


(No long-term trend for all indicators through 2020)



Lake Health: Winter Monitoring

- February and March 2021



See: mainelakes.org/water-testing-report/

Lake Health: Gloeotrichia

- High densities observed this year
- Reports of eye irritation
- DEP suggests wearing goggles and washing after swimming in dense patches



Photo credit: Alice Gold



Lake Health: Invasive Plant Survey

- Moose Pond survey completed August 18, 2021
- LEA crew surveyed areas in all three basins including the narrows, boat ramps, and association boat docks
- No invasive species found, diverse plant community including bladderwort and native milfoil



Lake Health: Lake Photo Inventory

- Pictures of all shoreline areas taken July 2021
- Last done in 2011
- Provides record of any land-use changes over time

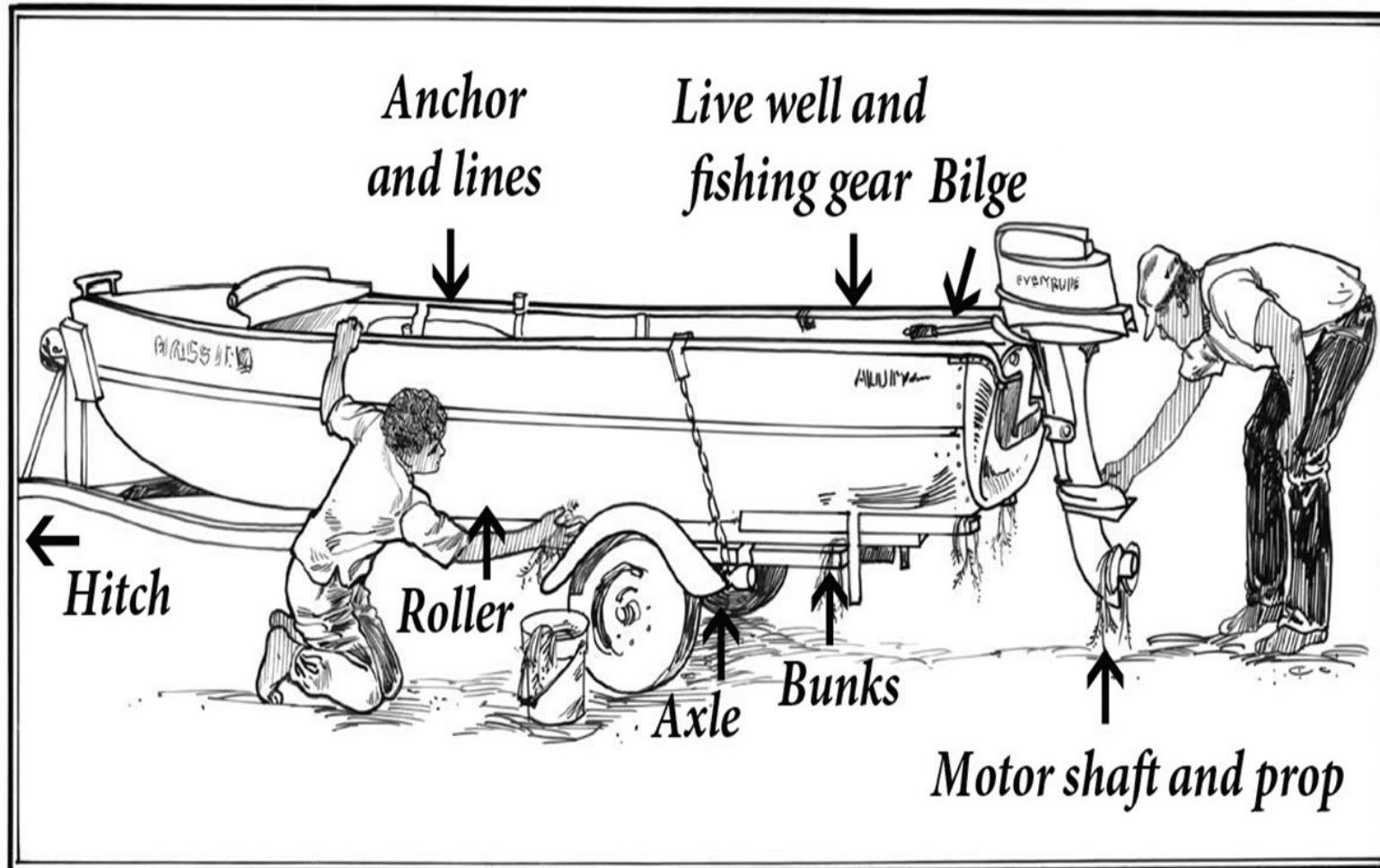


Lake Health: Loon Project – Year 1



Courtesy Boat Inspector (CBI) Activities

- The CBIs are our first line of defense



Good News!

- As in previous years, MPA partnered with LEA to provide Courtesy Boat Inspectors (CBIs) at the Route 302 and Denmark Boat Launch Ramps
- As of August 18th, No Invasive Plant Fragments Have Been Found

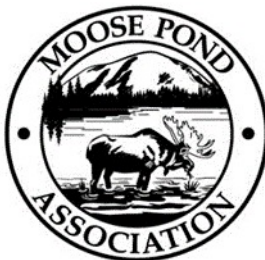


CBI Activities: Projected Hours and Days

Total projected CBI Hours = 1260

Rt. 302 ramp (850 hours/85 Days) May 29, 30 and 31st. June weekends plus the 29th & 30th; July 1st through August 31st; September weekends and the 2nd, 3rd and 6th. 7:00a to 5:00p

Denmark Ramp (410 hours) May 23, 24, 25; June weekends; July - Friday, Saturday and Sunday; August every Friday, Saturday and Sunday; September 5th, 6th and 7th, all from 7:00a to 5:00p



CBI Activities: Cost and Impact

Paid CBIs:

- Total of 1260 paid CBI hours per schedule
- Cost to cover the CBIs - \$16/hr. X 1260 = \$21,760
- CBIs provided by LEA and paid for by MPA

As of August 16th 2021:

- Rt. 302 ramp - 1034 boats inspected, 5 plants found, no invasive plants identified (6% decrease over last year)
- Denmark ramp - 275 boats inspected, 1 plants found, no invasive plant identified (56% decrease over last year)



CBI Activities: DEP Cost Share Grant

- MPA applied for \$6275 DEP cost share grant and was awarded \$3800 (Up from \$1,600/2018, \$3,100/2019 and \$3,500/2020)
- DEP grant program funded 100% through milfoil sticker sales
- LEA has not determined if an increase will happen in 2022. However, we should plan on a CBI cost increase of Lake Smart \$1 per hour due to possible wage changes and LEA overhead charges



Boat Wash Stations

- MPA is Responsible for Two Boat Wash Stations
 - One in West Bridgton at the Fire House on Rt. 302
 - The other in Denmark across from the Denmark Public beach on Moose Pond
- Collins Plumbing and Heating (Bridgton) donates time and materials to open, close and maintain both wash stations.
- The Denmark boat wash station was repaired by Collins Plumbing last Spring at no charge
- Please thank Collins Plumbing if you happen to use them!
- Bridgton Fire Chief also helped to facilitate the opening of the Rt. 302 wash station



Membership Health Report

- We have 190 members so far this year versus 173 last year at this time
- By year end we will have +/-230 members or 25% of 920+ parcels in and around the lake
- We solicit for new members several ways:
 - Annual solicitation letters to the 900+ residents that live in and around the lake
 - This year we did a “clean up” of the potential members by reviewing all owners and addresses against the Bridgton and Denmark real estate records. We had over 300 changes.
 - We are tracking your changes through the mailers as well so feel free to pass us any updates via mail/email
 - Thank you/tax letters to our generous donors
 - Our annual newsletter *Moose Pond Matters*
 - The Moose Pond Facebook site & MPA Web Site
 - Word of mouth
- Please promote MPA membership with your neighbors and mention the MPA and its importance at your neighborhood association meetings (we would be happy to make a brief presentation at those meetings if it would help)
- Broader membership would allow us to:
 - Pay for more CBI hours
 - Co-fund larger projects that will help to prevent unhelpful run-off from entering the lake
 - Increase the size of the emergency response fund that we have established to combat an unexpected milfoil infestation



Financial Health Report

- Contributions through 8/16 are \$27K vs. \$22K this time last year
- Expenses are \$3K this year vs. \$11K this time last year (but we will ultimately end up spending about \$34K)
- Our largest expenditures are:
 - The CBI program (\$20K – hourly rate went up this year)
 - Payments to LEA for surveys and monitoring along with an annual LEA donation
 - Membership communication including the website, newsletter and mailings
- We have a cash reserve of \$65K which we are maintaining for two reasons:
 - If we have a milfoil infestation in Moose Pond we want to take quick action to remediate it
 - We now offer matching funds (\$1 for \$1 up to \$1000) to lakeside homeowners who at the direction of LEA or LakeSmart choose to remediate troublesome run-off areas on their property



LakeSmart Program Reminder

- What is LakeSmart?
- What is the process?
- Will I regret participating (any participation risks)?
- Most frequently suggested remediation projects
 - Infiltration steps and/or dripline trenches
 - Lawn with lake buffers
 - Rain gardens
 - Lawn contouring
- Possible awards and matching funds
- Contact Bill Dexter at dexathome@gmail.com OR 207-232-0726



Wake Wise Reminder & Request



- If you live in a neighborhood with a common dock area, we would like you to get permission from your neighborhood association to post a Wake Wise sign near the marina's common entry point



Board Nominations and Elections

<u>Board Member</u>	<u>Remaining Term (Years)</u>	<u>Expiration Year</u>
• Zach Clayton	2	2023
• Bill Dexter	1	2022
• Bill Dromerhauser	1	2022
• Paul Dwyer	1	2022
• Scott Frame	2	2023
• Bill Muir	1	2022
• Anne Munstedt (Clerk)	2	2023
• Mark Patterson (President)	3	2024
• Gordon Pulsifer	Retired	2021
• Stephanie Scarce	3	2024
• Laurie Vance (Treasurer)	Renewed	2021
• Chip Wendler (Vice President)	3	2024



Q & A Period

